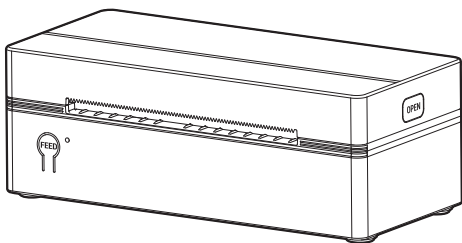


RONGTA



Label Printer

RP425

User Manual

Version:1.1

CONTENT

1. Smartphone App Download	3
2. Appearance	4
3. Opening-box List	4
4. Printer Connection.....	5
5. The suitable label size	6
6. How to feed label.....	6
7. Driver	8
8. BarTender Designer	20
9. Setup Printing.....	22
10. Specifications.....	25
11. Button and Indicator Light Instructions	26
12. Safety tips	27
13. Maintenance.....	27
14. FCC WARNING.....	28

1. Smartphone App Download

Smartphone:

Download the "RT ELabel" App.

Method 1: 1) iOS: Search and download "RT ELabel" from App store.

2) Android: Search and download "RT ELabel" from Google Play.



Method 2: Scan the QR code below.

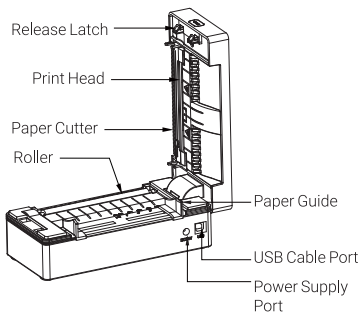
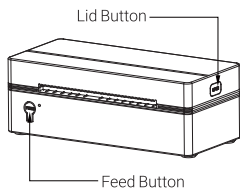


RT ELabel App

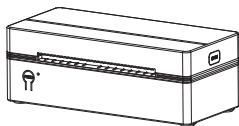
Bluetooth pairing code(If need): 0000 or 000000

Supported Bluetooth devices: iOS, Android, iPad, macOS (limited to M series chips)

2. Appearance



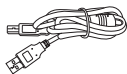
3. Opening-box List



Printer



Adapter



USB Cable



Power Cord



User Manual



Type-C Adapter

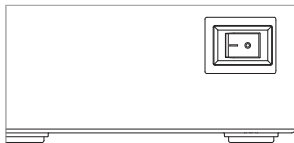


If any accessories missing, please contact us: service_support@rongtatech.com

4. Printer Connection

Note:

- Ensure the printer is OFF.
- Use original power adapter only in case harm or injury.
- Unplug if no use in a long time.



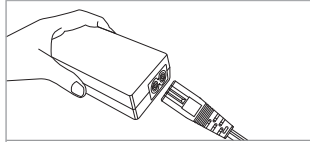
1 Ensure the printer is OFF



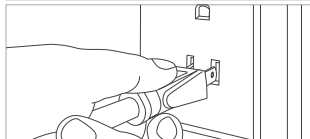
OFF



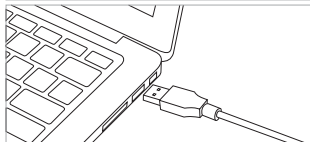
ON



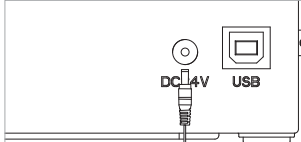
2 Attach the power cord to the adapter



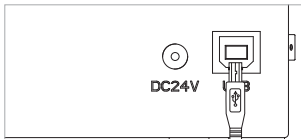
4 Plug the power cord into the socket



6 Connect the printer to the computer



3 Connect the power



5 Connect the computer with a USB cable

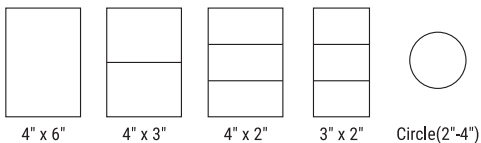


7 Turn the power on

5. The suitable label size

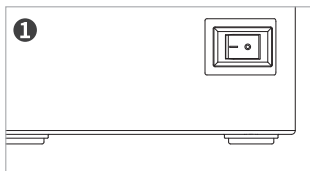
Label Printer works with any Direct Thermal Label, and compatible with a width range from 1.57" to 4.1" and length over 0.79"

Label standard size

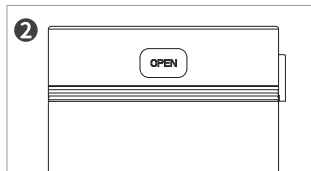


For better print quality, please use the labels provided (sold) by Rongta.

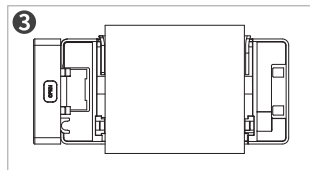
6. How to feed label



Ensure the printer is OFF

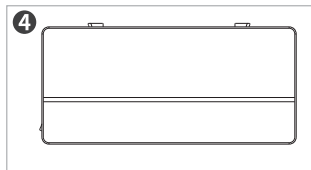


Press to open the top cover

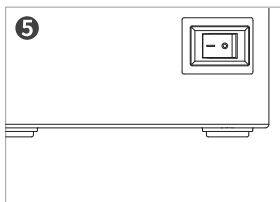


Load the label and adjust the paper guide to fit the width of paper.

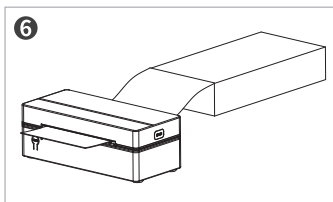
The label you peel off should be facing up (toward the ceiling)



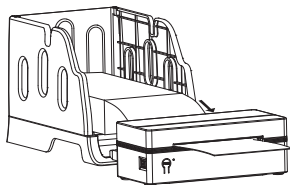
Carefully close the cover



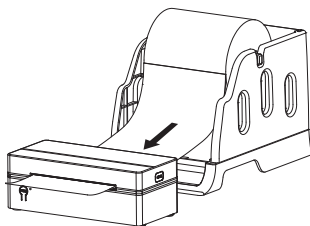
Turn the power on



Label will be automatically positioned at the tear-off point.
Rongta Printer is ready to print.



Fan-fold Type Label Loading
(Label holder not included)



Roll Type Label Loading
(Label holder not included)

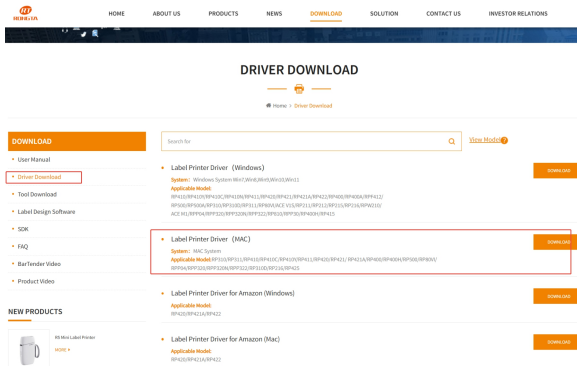
7. Driver

7.1 Mac: Driver Installation -USB

7.1.1 Driver download

Before using the printer with your computer, you will need to install our driver software on your computer.

- 1) Ensure the printer is **"ON"**, and the label paper was loaded properly.
- 2) Connect the USB cable from your computer to the printer.
- 3) Please visit **URL: www.rongtatech.com** ----> find **"Label Printer Drivers(MAC)"** and download it to your Mac.



Ensure the printer is **"ON"** and the USB cable is connected with your computer the printer. Double-click the downloaded driver **"RTLabelPrinterMacDriver.pkg"** and follow the prompts to complete the installation.

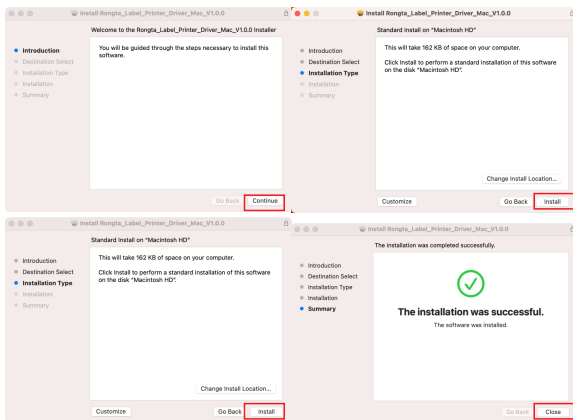


Note:

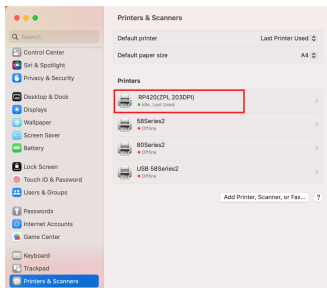
If you are unable to download the driver software from our website, please contact our service team: service_support@rongtatech.com

7.1.2. Driver installation

Double-click the driver software and follow the prompts to complete the installation. Click **“Continue”** → click **“Install”** and follow the prompt to complete the installation.



When the driver is installed, connect the Printer USB to your computer and go to **Settings** → **Printer & Scanners**, you can see the **RP425** printer.



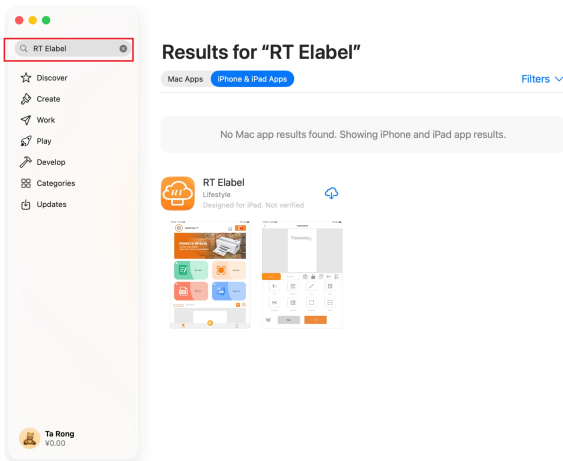
Note:

- 1: After installation, the printer model (command, resolution) will be automatically recognized.
- 2: After the USB driver is successfully installed, select the corresponding printer in the application software's printing menu to achieve printing.

7.2 Mac: macOS system Bluetooth printing operation

7.2.1 Download App

Click "App Store" -> Enter "RT Elabel", and follow the step-by-step prompts to complete the download.



7.2.2 Connect the printer

For more clear of install, connect & using App on macOS, please kindly visit our related demo video URL: "www.rongtatech.com"

- 1) Make sure the App installed, the bluetooth of smartphone activated.
- 2) Keep the printer power on.
- 3) Select the top left icon, and select the printer to connect.
- 4) Pairing code if need: "0000 or 000000".

7.3 Windows: Installation of BarTender Driver

7.3.1 Driver download

Before installation, please download BarTender driver installation package on

URL: "www.rongtatech.com"

7.3.2 Install the driver by connecting the USB port

When installing the BarTender driver for the first time

Make sure that the USB is connected to the printer and the computer, and the printer is power on.

- 1) Run the installation package ,Click and check **"I accept the terms in the license agreement"**, and click **"Next"**.

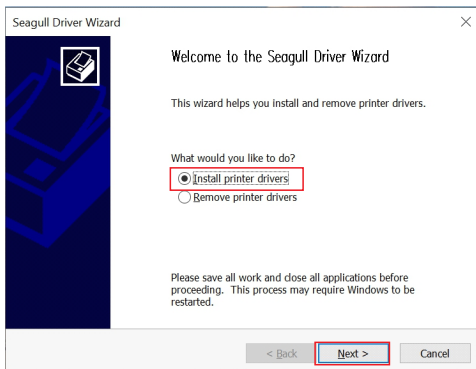


- 2) Click **"Browse"** to select the decompression path of the driver, and then click **"Next"**.
- 3) Check **"Run Driver Wizard after unpacking drivers"** in the interface, Click **"Finish"**.
- 4) Click **"Yes"**.

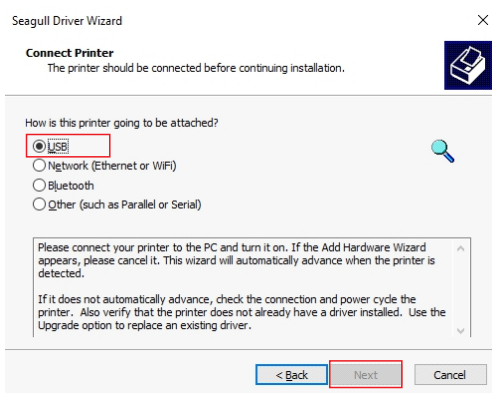


Note: BarTender Driver System support: Win7,Win8,Win8.1,Win10,Win11,Windows Server2022,2019,2016,2012 R2,2012,2008 R2.32 and 64 bit versions.

5) Select **"Install printer drivers"**, and then click **"Next"**.

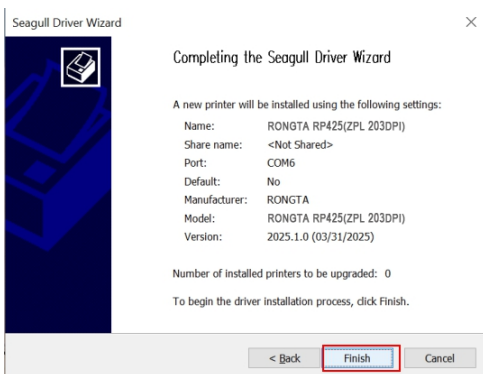


6) Select the **"USB"** connection and click **"Next"**.



Note: If you have previously connected the printer to the computer with a USB cable, this step will be automatically skipped and not displayed.

- 7) Click **"Next"**.
- 8) Set the printer name and whether to set the printer as the default printer.
Click **"Next"** to complete the driver installation.
- 9) Click **"Finish"**.



- 10) Click **"Close"**.

Installation completed. Check whether the printer has been installed successfully: Click the Microsoft icon at the lower left corner of the computer, select **"Control Panel"** → **"View Devices and Printers"**.

After the USB driver is successfully installed, you can select the corresponding printer name in the application software to achieve printing.

7.3.3. Install the Driver by Bluetooth Connecting

Make sure the Windows computer is Build in Bluetooth, and the Bluetooth is Activated.
Make sure the printer is turned on normally. (there is no need to connect the printer and the computer with a USB cable.)

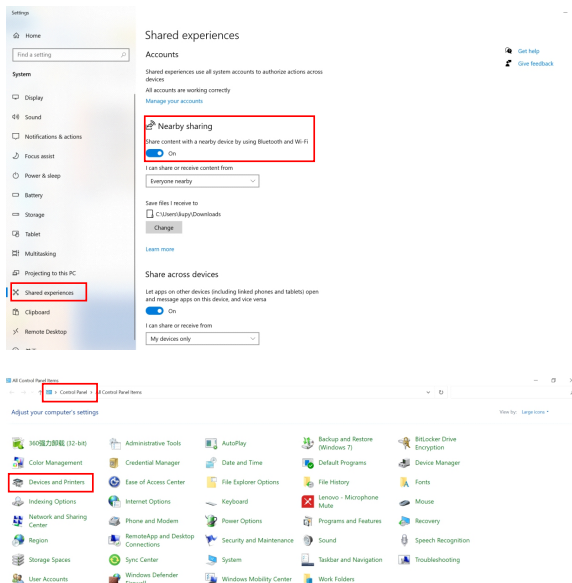
1) Pair the printer with the PC via Bluetooth

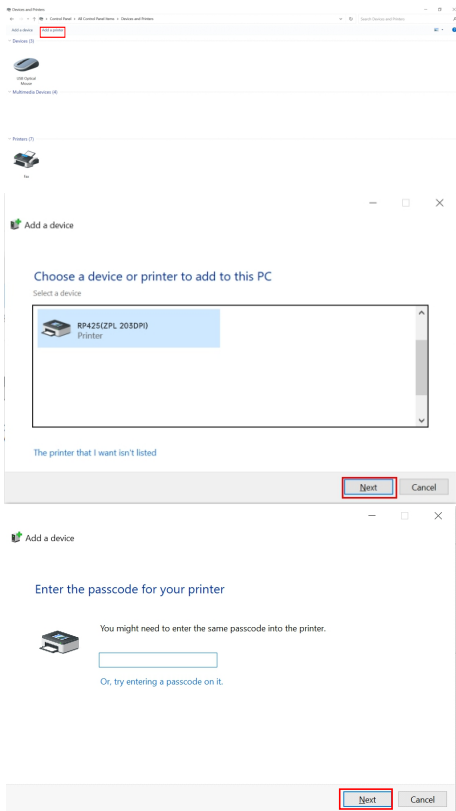
Note: Connect the computer and printer first, and then install the driver.

Follow the guiding steps below to connect to Bluetooth.

Settings → Shared experiences → Nearby Sharing → On

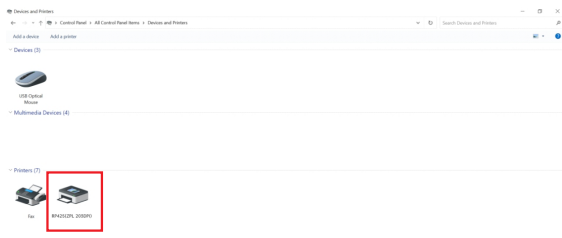
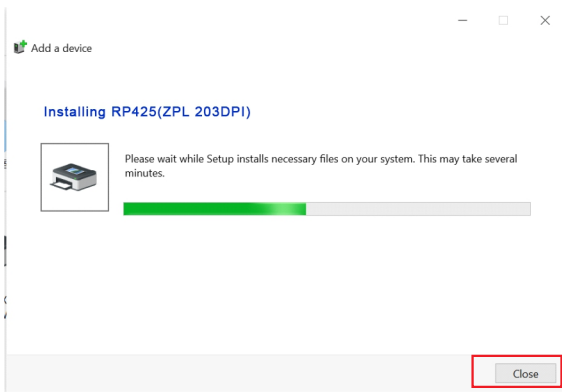
Control Panel → Devices and Printers → Add a Printer → Add a Device





Note: The pairing code can be obtained by viewing the self-test pages "BT PIN", "SPP PIN", and "BLE PIN". The default is generally "0000" or "000000".

The method for printing the self-test page: Hold down the FEED button and turn on the power switch at the same time. After hearing a "beep" sound, print out the self-test page.



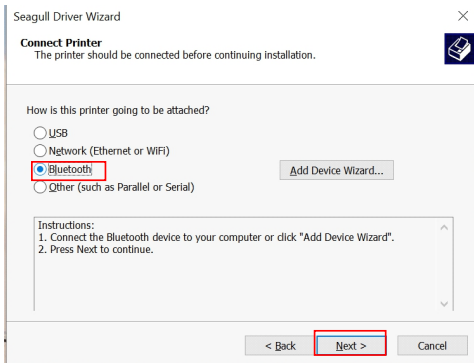
The printer pairing is completed.

Continue to install the Bluetooth driver.

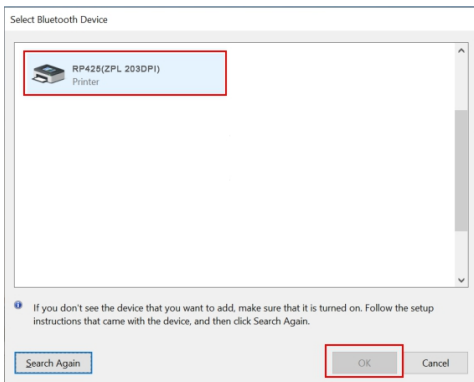
2) Bluetooth driver installation

The first 5 steps are the same as installing the driver on the USB port (refer to P11-P12). The starting steps of Step 6 are different as follows:

- Click to select **"Bluetooth"** connection, and then click **"Next"**.

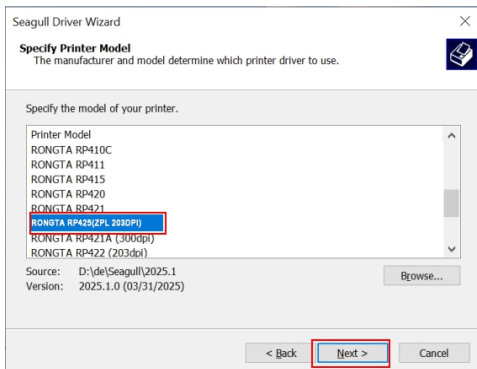


- Locate the target printer for installation and click **"OK"**.



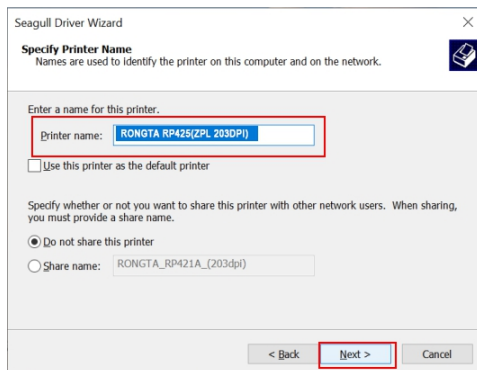
- Select the target printer model and click "Next".

Note: The model name shown here is the model of the printer and does not come with a Bluetooth code.



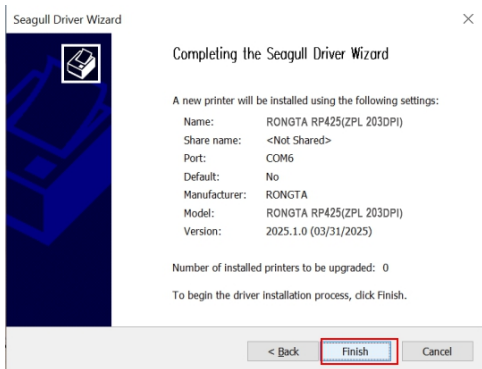
The screenshot shows the 'Specify Printer Model' window of the Seagull Driver Wizard. The window title is 'Seagull Driver Wizard' with a close button (X) in the top right corner. Below the title bar, there is a printer icon. The main heading is 'Specify Printer Model' followed by the instruction 'The manufacturer and model determine which printer driver to use.' Below this, a text box says 'Specify the model of your printer.' A list box contains several printer models: 'RONGTA RP410C', 'RONGTA RP411', 'RONGTA RP415', 'RONGTA RP420', 'RONGTA RP421', 'RONGTA RP425(ZPL 203DPI)' (which is highlighted with a red box), 'RONGTA RP421A (500dpi)', and 'RONGTA RP422 (203dpi)'. Below the list box, the 'Source' is 'D:\de\Seagull\2025.1' and the 'Version' is '2025.1.0 (03/31/2025)'. There is a 'Browse...' button to the right of the version information. At the bottom, there are three buttons: '< Back', 'Next >' (highlighted with a red box), and 'Cancel'.

- Click "Next".



The screenshot shows the 'Specify Printer Name' window of the Seagull Driver Wizard. The window title is 'Seagull Driver Wizard' with a close button (X) in the top right corner. Below the title bar, there is a printer icon. The main heading is 'Specify Printer Name' followed by the instruction 'Names are used to identify the printer on this computer and on the network.' Below this, a text box says 'Enter a name for this printer.' A text box labeled 'Printer name:' contains 'RONGTA RP425(ZPL 203DPI)' and is highlighted with a red box. Below this, there is a checkbox labeled 'Use this printer as the default printer' which is unchecked. Below that, a text box says 'Specify whether or not you want to share this printer with other network users. When sharing, you must provide a share name.' There are two radio buttons: 'Do not share this printer' (which is selected) and 'Share name: RONGTA_RP421A_(203dpi)'. At the bottom, there are three buttons: '< Back', 'Next >' (highlighted with a red box), and 'Cancel'.

- Click **"Finish"**.



- Click **"Close"**.

Installation completed. Check whether the printer has been installed successfully: Click the Microsoft icon at the lower left corner of the computer, select **"Control Panel"** → **"View Devices and Printers"**.

7.4 Google Chrome, Chrome OS installation: USB & Bluetooth

7.4.1 Extention Download

Before installing and connect, please be sure the printer is Power ON, and the computers are Build-in Bluetooth, or USB cable connecting

- 1) Go to Google Chrome Web Store, Search "Rongta"
- 2) For more operation demo video please vist: "www.rongtatech.com"

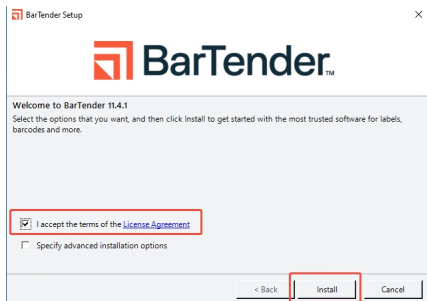
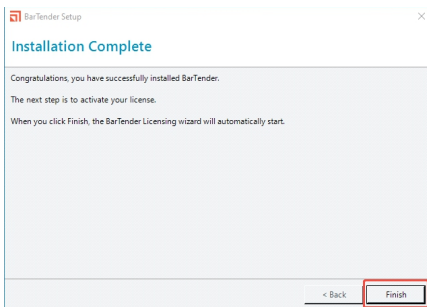
► **Note:** If you are unable to download the driver software from our website, please contact our service team: service_support@rongtatech.com

8. BarTender Designer

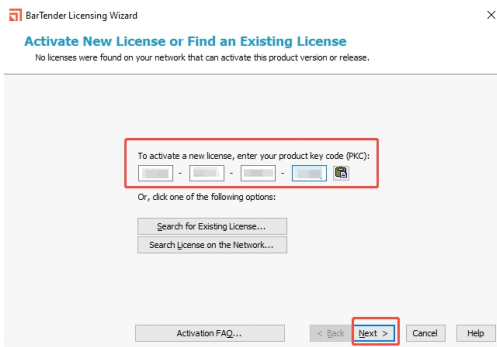
8.1 Windows: Installation of BarTender software

Before installation, Both please download BarTender software installation package on "www.rongtaglobal.com/bartender".

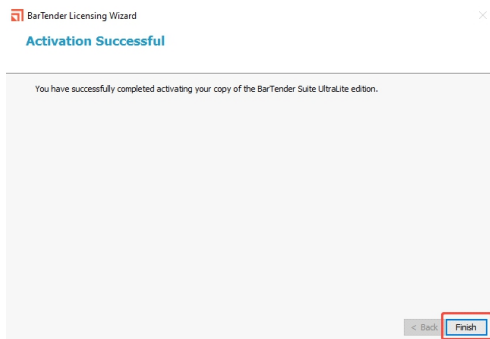
8.1.1 Double-click to install the software → "Yes" → "Finish" → "Install" → enter your product key code "Next" → "Finish".



► **Note:** System support: Windows 11 (32-bit and 64-bit), Windows 10 (32-bit and 64-bit) Windows Server 2022, Windows Server 2019, Windows Server 2016.



► **Note:** Key code: Z0HB-E2CL-E9BB-72H9



8.2 BarTender: Introduction to Basic Operations of the software interface

8.2.1 For operations of BarTender Designer usage demo video, please kindly visit:

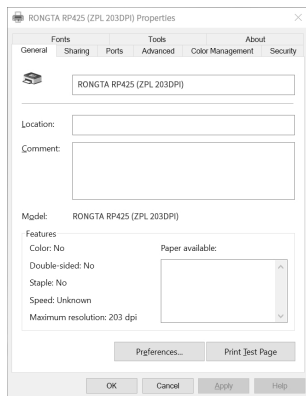
"www.rongtaglobal.com/bartender"

9. Setup Printing

There are two steps that need to do when you printing the labels.

- Learn the label identification. RP425 printer will start automatic label identification when you load the label. Or you can press and hold the paper feed button until you hear one beep and then release, it will learn the label too.
- Set proper label settings on your computer and please make sure your page size to match your label size.

9.1 Windows setup printing

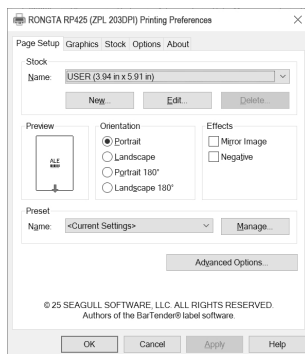


Pls click "RP425 (ZPL 203DPI) " select "**Printer properties**", it will show left icon:

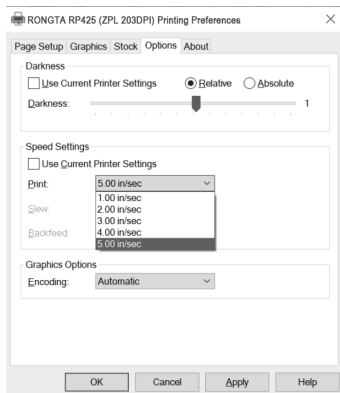


Check to ensure the driver has installed properly by click the "**Print Test Page**" to printing the test page.

Set printing preferences by click "**Preferences**", it will show right icon: You can select the size of the paper through the "**Name**" column. If there is no paper size to match your label size, you can click "**Edit**" to make custom size.

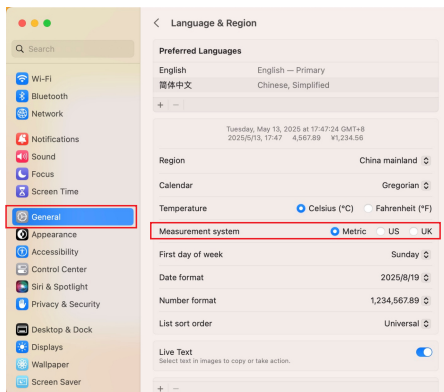


Click **"Options"** to set your print **"Darkness"** and **"Speed Settings"**.

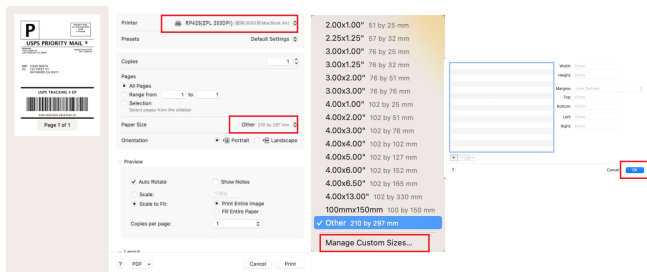


9.2 Mac setup printing

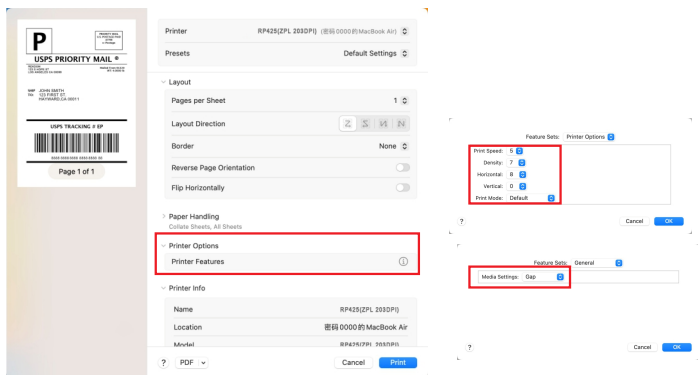
Unit Switching –> **"General"** –> **"Measurement system"**.



Open the sample label to print, select **"RP425 Printer"**, and choose the paper size you want to print. For other sizes not listed, click paper size → select **"Manage Custom Sizes..."** → click "+" to add a new size. If you want to add a 100x64mm size, enter 100 for the width and 64 for the height. Double-click **"Untitled"** to rename it to 100x64mm > click **"OK"**.



Select **"Printer Options"** → click the drop-down icon → click **"Printer Features"** → here you can adjust the print speed, density and media settings.





10. Specifications

Item		Specification
Printing	Printing Method	Direct thermal
	Resolution	203dpi
	Max.Print Width	4.23"(108mm)
	Max.Print Speed	6 ips(150mm/s)
	Print Length	0.79"-11.81"(20-300mm)
Sensors		Thread mark detection, black mark detection, paper shortage detection, lid opening detection, headplate temperature detection
Media	Types	Label paper, black label paper (lower black label), folding paper
	Width	0.98"-4.37"(25-111mm)
	Thickness	0.0023"-0.0071"(0.06mm~0.18mm)
PEEL-OFF Label Method		Manual paper tearing
Processor		32bit ARM MCU
Memory	RAM	2MB
	FLASH	4MB
Function	Button	Power Button, Feed button, Open cover button
	Pilot Light	Present
	Buzzer	Buzzer warning
Interface		Bluetooth+USB
Emulation		ZPL+ESC
Fonts		ASCII Font: 10x12, 14x20, 16x24, 24x32, 36x48, 14x19, 21x27, 14x25, 12x24
Code Pages		CP437, CP850, CP852, CP860, CP863, CP865, CP866, WPC1250, WPC1251, WPC1252, WPC1253, WPC1254
Barcode	1D	Code39, Code39C, I25, Code93, ITF25, EAN128, Code128, Codabar, EAN-8, EAN8+2, EAN8+5, EAN-13, EAN13+2, EAN13+5, UPC-A, UPCA+2, UPCA+5, UPCE, UPCE+2, UPCE+5MSIC, ITF14, EAN14, Code11
	2D	QRCODE, PDF417(Optional)
Software	Driver	XP/Win7/Win8/Win10/Win11/macOS/Chrome
	SDK	Android、ios、windows
	Label Design	APP \ BarTender Designer
Power Adoppter		I/P: AC 100-240V , 50/60Hz
		O/P: DC 24V/2.5A
Environment	Operation	Temp: 32-104°F(0-40°C); Humidity: 20-90%, Non-Condensing
	Storage	Temp: 14-140°F(-10-60°C); Humidity: 5-95%, Non-Condensing
Physical Characteristics	Dimension	180*83*65mm
	Weight	0.57kg

11. Button and Indicator Light Instructions

Button Function instructions

Button	Function description	Controls
Power button	Turn on	Press the power button to the "I" position for turn on 
	Turn off	Press the power button to the "O" position for turn off 
FEED button	Pause printing/ Resume printing	Press the [FEED Button] during the printing process, and the printer will pause the current printing task. When the [FEED Button] is pressed again, the printer will continue with the original printing task.
	Paper feeding	Press the [FEED Button] in standby mode. When the paper is not continuous, one label will be fed; when the paper is continuous, 2cm of paper will be fed.
	Label learning	In standby mode, press and hold the [FEED Button] for 3 seconds and you will hear a "beep" "beep" sound. Release the [FEED Button] and the printer will power button label learning.
	Print the self-test page	In standby mode, press and hold the [FEED Button] for 3 seconds and you will hear a "beep" "beep" sound. Release the [FEED Button] and the printer will power button label learning.
	Factory data reset	Press and hold for 10 seconds with the cover open. When the beeping sound briefly disappears, release the button and restore the factory Settings.

Indicator light instructions

Indicator light status	Status declaration	
The indicator light remains on constantly	Normal standby	
Indicator blinking	Buzzer alarm	
Buzzer alarm prompt	2 sounds	Abnormal alarm for print head connection
	3 sounds	Paper shortage alarm
	5 sounds	Overheating alarm of the head piece
	6 sounds	Alarm when the cover is opened
	7 sounds	No seam mark alarm was detected

12. Safety tips

- The printer head can become very hot after printing labels. Do not touch the printer head until it has cooled.
- Do not bend the power cord excessively or place objects on the cord. This could result in fire.
- Keep the printer out of reach of children.
- Use only approved accessories and do not try to disassemble or repair the unit by yourself.
- Keep the printer away from water and other objects that may destroy or damage the device.
- Printer should remain unplugged when not in use for long periods of time.

13. Maintenance

CLEANING THE PRINT HEAD

The printer head is a sensitive part of the printer and can be found on the upper part of the printer when open.

Caution: While the printer is running, the printer head can be very hot.

- 1) Ensure that the power switch is OFF, remove the power cord, and open the cover. Wait several moments to ensure that the print head cools down.
- 2) Completely clean the printer head using an alcohol swab. Any 70% Isopropyl Alcohol pad would work. Please do not use water.
- 3) Wait 2-3 minutes until the alcohol has completely dried, then close the cover.
- 4) Connect the power cord and print a test page to check if it is clean.

14. FCC WARNING

Any Changes expressly or modifications not approved by the party responsible for compliance could void the user's authority to operate the equipment. This device complies with Part 15 of the FCC Rules.

Operation is subject to the following two conditions:

(1) This device may not cause harmful interference, and (2) This device must accept any interference received, including interference that may cause undesired operation.

Note: This equipment has been tested and found to comply with the limits for a Class B digital device, pursuant to Part 15 of the FCC Rules. These limits are designed to provide reasonable protection against harmful interference in a residential installation.

This equipment generates, uses, and can radiate radio frequency energy and, if not installed and used in accordance with the instructions, may cause harmful interference to radio communications. However, there is no guarantee that interference will not occur in a particular installation. If used for a long time, remove the battery and store it separately.

If this equipment does cause harmful interference to radio or television reception, which can be determined by turning the equipment off and on, the user is encouraged to try to correct the interference by one or more of the following measures:

- Reorient or relocate the receiving antenna.
- Increase the separation between the equipment and receiver.
- Connect the equipment into an outlet on a circuit different from that to which the receiver is connected.
- Consult the dealer or an experienced radio/TV technician for help.

FCC Radiation Exposure Statement:

This equipment complies with FCC radiation exposure limits set forth for an uncontrolled environment.

This transmitter must not be co-located or operating in conjunction with any other antenna or transmitter.



Rongta Technology (Xiamen) Group Co., Ltd.

ADD: No.88,Tonghui South Road,Tongan,Xiamen, China.

Email: service_support@rongtatech.com

WEB: www.rongtatech.com